

12TH LEVEL



UNIT 5
 2 bedroom - 2 bath + Den
 1,445 S.F. / 134.24m²
 Balcony (Living Room): 92 S.F. / 8.55m²
 Balcony (Master Bedroom): 62 S.F. / 5.76m²
 Balcony (Bedroom/Den): 93 S.F. / 8.64m²

Kitchen	9'-8" x 11'-8" / 2.95 m x 3.56 m
Living Room	20'-4" x 12'-3" / 6.2 m x 3.73 m
Den	13'-8" x 13'-4" / 4.17 m x 4.06 m
Bedroom 1	13'-6" x 13'-2" / 4.11 m x 4.01 m
Walk in closet	5'-4" x 7'-0" / 1.6 m x 2.13 m
Master Bedroom	12'-3" x 12'-3" / 3.73 m x 3.73 m
Walk in closet	7'-0" x 6'-8" / 2.13 m x 2.06 m

UNIT 1
 2 bedroom - 2 bath + Den
 1,435 S.F. / 133.32m²
 Balcony (Living Room): 92 S.F. / 8.55m²
 Balcony (Master Bedroom): 62 S.F. / 5.76m²
 Balcony (Bedroom/Den): 93 S.F. / 8.64m²

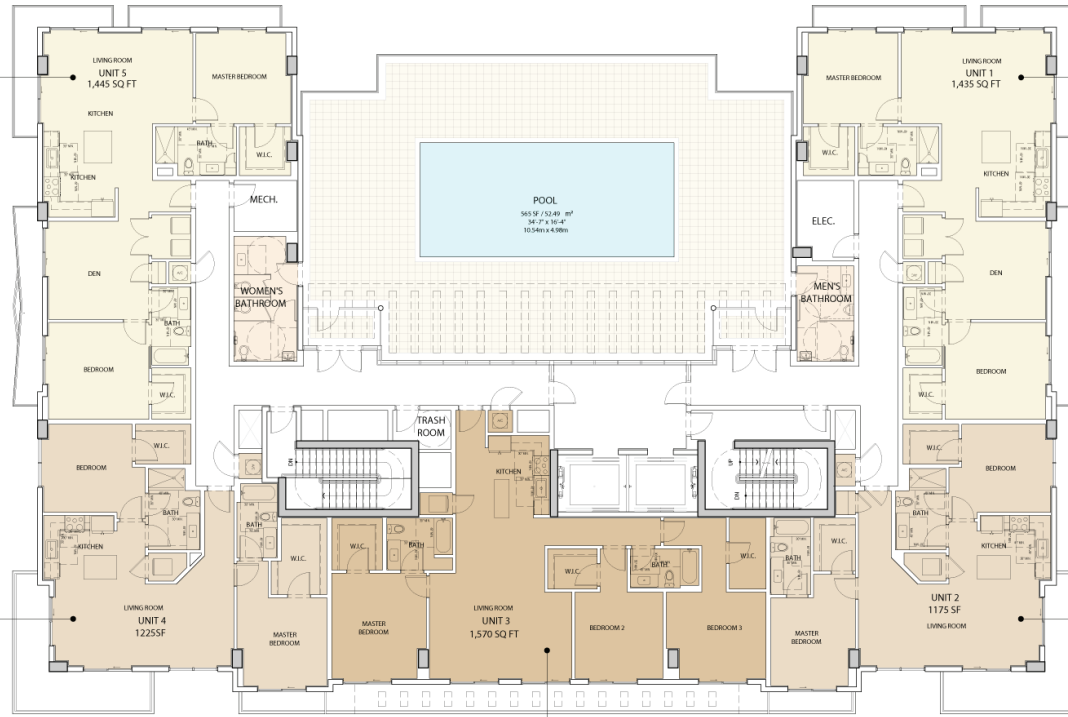
Kitchen	9'-8" x 11'-8" / 2.95 m x 3.56 m
Living Room	20'-4" x 12'-3" / 6.2 m x 3.73 m
Den	13'-8" x 13'-4" / 4.17 m x 4.06 m
Bedroom 1	13'-6" x 13'-2" / 4.11 m x 4.01 m
Walk in closet	5'-4" x 7'-0" / 1.6 m x 2.13 m
Master Bedroom	12'-3" x 12'-3" / 3.73 m x 3.73 m
Walk in closet	7'-0" x 6'-8" / 2.13 m x 2.06 m

UNIT 4
 2 bedroom - 2 bath
 1,225 S.F. / 113.8m²
 Balcony (Living Room): 176 S.F. / 16.4m²
 Balcony (Master Bedroom): 35 S.F. / 3.25m²

Kitchen	9'-7" x 8'-8" / 2.92m x 2.64m
Living Room	24'-7" x 11'-0" / 7.49m x 3.35m
Bedroom 1	12'-1" x 12'-0" / 3.68m x 3.66m
Walk in closet	7'-7" x 5'-5" / 2.31m x 1.65m
Master Bedroom	10'-6" x 12'-0" / 3.23m x 3.66m
Walk in closet	7'-7" x 10'-5" / 2.31m x 3.18m

UNIT 2
 2 bedroom - 2 bath
 1,175 S.F. / 109.16m²
 Balcony (Living Room): 176 S.F. / 16.4m²
 Balcony (Master Bedroom): 35 S.F. / 3.25m²

Kitchen	9'-7" x 8'-8" / 2.92m x 2.64m
Living Room	24'-7" x 11'-0" / 7.49m x 3.35m
Bedroom 1	12'-1" x 12'-0" / 3.68m x 3.66m
Walk in closet	7'-7" x 5'-5" / 2.31m x 1.65m
Master Bedroom	10'-6" x 12'-0" / 3.23m x 3.66m
Walk in closet	5'-8" x 7'-3" / 1.73m x 2.20m



UNIT 3
 3 bedroom - 2 bath
 1,570 S.F. / 145.86m²
 Balcony: 239 S.F. / 22.2m²

Kitchen	8'-4" x 11'-3" / 2.53m x 3.45m
Living Room	19'-11" x 14'-4" / 5.82m x 4.34m
Bedroom 2	12'-0" x 11'-9" / 3.65m x 3.56m
Walk in closet	6'-9" x 5'-6" / 2.05m x 1.67m
Bedroom 3	13'-0" x 11'-9" / 3.96m x 3.58m
Walk in closet	5'-0" x 9'-8" / 1.52m x 2.95m
Master Bedroom	12'-10" x 14'-4" / 3.91 m x 4.36 m
Walk in closet	6'-11" x 7'-1" / 2.10m x 2.17m

Stated dimensions are measured to the exterior boundaries of the exterior walls and the centerline of interior demising walls and in fact vary from the dimensions that would be determined by using the description and definition of the "unit" set forth in the Declaration (which generally only includes the interior airspace between the perimeter walls and excludes interior structural components), which will typically be smaller. Note that measurements of rooms set forth on the floor plan(s) above are generally taken of the greatest points of each given room (as if the room were a perfect rectangle), without regard for any cutouts. Accordingly, the area of the actual room will typically be smaller than the product obtained by multiplying the stated length times width. All dimensions and square footages are approximate based on preliminary plans and may vary with actual construction. The floor plan(s) above represents the typical floor plan for the residence type indicated, but the actual floor plan of a specific residence may differ. All floor plans and development plans are proposed and conceptual only, and are subject to change. See Legal Disclaimer on Final Page.